



# UK Flowtechnik

Specialists in flow metering, pumps, couplings  
and process measurement equipment

## PRODUCT DATASHEET

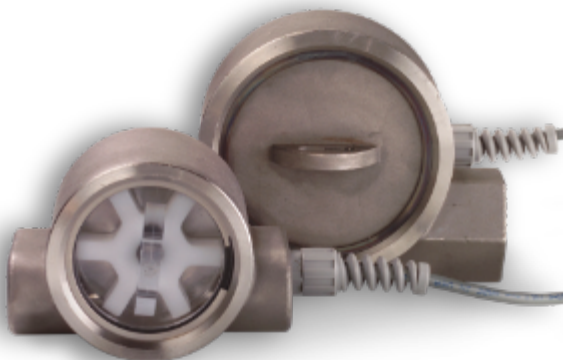


UK Flowtechnik Ltd  
1 Central Park  
Lenton Lane  
Nottingham  
NG7 2NR  
United Kingdom

Phone +44 (0) 11 59 01 71 11  
UK Free Phone 0800 4334 770  
Fax +44 (0) 11 59 86 88 75

[sales@ukflowtechnik.com](mailto:sales@ukflowtechnik.com)  
[www.ukflowtechnik.com](http://www.ukflowtechnik.com)

# FlowStat Pelton Wheel Flowmeter



The FlowStat with its Stainless Steel body and robust construction, is ideal for industrial process applications. From cement trucks to cooling towers and foundries to bakeries the FlowStat fits the bill. Its clear cover allows operators to see flow at a glance whilst it's choice of outputs will plug straight into most PLC's, SCARDA, BMS and Datalogging systems without the need for additional equipment.

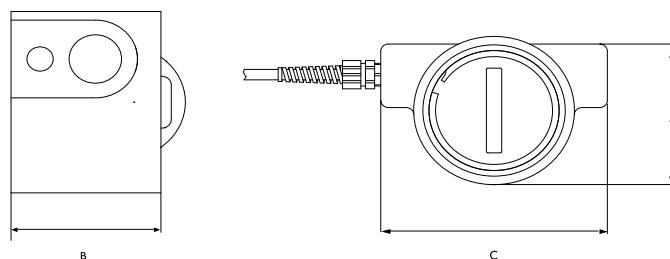
## Features & Benefits

- Current, Voltage, frequency or switch output
- 2-60 & 60-200 l/min ranges (low flow adaptor 1-17 l/min)
- Linearity 2% FSD
- Clear cover
- 1/2", 3/4" and 1" sizes
- Rugged and industrial Stainless Steel body

## Technical Data

Body Material	316 Stainless Steel
Rotor Material	Acetal Copolymer
Bearings/Shaft Material	PEEK/316 Stainless Steel
Cover material	Polycarbonate (316 Stainless Steel option)
Seal	Buna-N (Nitrile) (others on request)
Linearity	+/- 2% FSD
Max Pressure (Bar)	14 Bar (34 Bar with Stainless Steel cover)
Max Temperature (°C)	107°C
Power Supply	12-24 Vdc
Pulse Output	NPN square-wave 12-24 Vdc, 25 mA (approx 53 P/L for 1/2" & 16 P/L for 3/4" & 1" models)
Analogue Voltage Output	0-5V
Analogue Current Output (2 wire loop)	2 wire 4-20 mA
Relay Output	1 x change-over contact 240 vac, 5A

## Dimensional Data



	1/2"	3/4" & 1"
A	67	97
B	51	62
C	94	133

## Ordering Information

P		S		D		-		29		-		V																																																															
<div> <div> <b>Output</b> <ul style="list-style-type: none"> <li>Current (2 wire 4-20 mA) <b>C</b></li> <li>Pulsed (NPN pulse) <b>P</b></li> <li>Relay (adjustable flow switch) <b>R</b></li> <li>Voltage (0-5 V) <b>V</b></li> <li>Voltage &amp; Relay <b>S</b></li> <li>Voltage &amp; Temperature <b>T</b></li> </ul> </div> <div> <b>Rotor Cover</b> <ul style="list-style-type: none"> <li>316 Stainless Steel <b>S</b></li> <li>Clear Polycarbonate <b>C</b></li> </ul> </div> <div> <b>Port Size (NPT)</b> <ul style="list-style-type: none"> <li>1/2" <b>B</b></li> <li>3/4" <b>C</b></li> <li>1" <b>D</b></li> </ul> </div> <div> <b>Flow Range l/ Connections min NPT</b> <table border="1"> <tbody> <tr><td>0.9-9 (LF suffix)</td><td>1/2"</td><td><b>02</b></td></tr> <tr><td>1.3-13 (LF suffix)</td><td>1/2"</td><td><b>03</b></td></tr> <tr><td>1.7-17 (LF suffix)</td><td>1/2"</td><td><b>04</b></td></tr> <tr><td>2-20</td><td>1/2"</td><td><b>05</b></td></tr> <tr><td>3-30</td><td>1/2"</td><td><b>08</b></td></tr> <tr><td>4-40</td><td>1/2"</td><td><b>11</b></td></tr> <tr><td>5-50</td><td>1/2"</td><td><b>13</b></td></tr> <tr><td>6-60</td><td>3/4" or 1"</td><td><b>15</b></td></tr> <tr><td>7-70</td><td>3/4" or 1"</td><td><b>19</b></td></tr> <tr><td>8-80</td><td>3/4" or 1"</td><td><b>21</b></td></tr> <tr><td>9-90</td><td>3/4" or 1"</td><td><b>24</b></td></tr> <tr><td>10-100</td><td>3/4" or 1"</td><td><b>27</b></td></tr> <tr><td>11-110</td><td>3/4" or 1"</td><td><b>29</b></td></tr> <tr><td>12-120</td><td>3/4" or 1"</td><td><b>32</b></td></tr> <tr><td>13-130</td><td>3/4" or 1"</td><td><b>35</b></td></tr> <tr><td>14-140</td><td>3/4" or 1"</td><td><b>37</b></td></tr> <tr><td>15-150</td><td>3/4" or 1"</td><td><b>40</b></td></tr> <tr><td>16-160</td><td>3/4" or 1"</td><td><b>42</b></td></tr> <tr><td>17-170</td><td>3/4" or 1"</td><td><b>45</b></td></tr> <tr><td>18-180</td><td>3/4" or 1"</td><td><b>48</b></td></tr> </tbody> </table> </div> <div> <b>Options</b> <ul style="list-style-type: none"> <li>Low Flow Adaptor (ranges 02, 03 &amp; 04 only) <b>LF</b></li> </ul> </div> <div> <b>Cover Seal</b> <ul style="list-style-type: none"> <li>Buna-N (Nitrile) (standard) <b>B</b></li> <li>EPR <b>E</b></li> <li>Viton <b>V</b></li> </ul> </div> </div>																0.9-9 (LF suffix)	1/2"	<b>02</b>	1.3-13 (LF suffix)	1/2"	<b>03</b>	1.7-17 (LF suffix)	1/2"	<b>04</b>	2-20	1/2"	<b>05</b>	3-30	1/2"	<b>08</b>	4-40	1/2"	<b>11</b>	5-50	1/2"	<b>13</b>	6-60	3/4" or 1"	<b>15</b>	7-70	3/4" or 1"	<b>19</b>	8-80	3/4" or 1"	<b>21</b>	9-90	3/4" or 1"	<b>24</b>	10-100	3/4" or 1"	<b>27</b>	11-110	3/4" or 1"	<b>29</b>	12-120	3/4" or 1"	<b>32</b>	13-130	3/4" or 1"	<b>35</b>	14-140	3/4" or 1"	<b>37</b>	15-150	3/4" or 1"	<b>40</b>	16-160	3/4" or 1"	<b>42</b>	17-170	3/4" or 1"	<b>45</b>	18-180	3/4" or 1"	<b>48</b>
0.9-9 (LF suffix)	1/2"	<b>02</b>																																																																									
1.3-13 (LF suffix)	1/2"	<b>03</b>																																																																									
1.7-17 (LF suffix)	1/2"	<b>04</b>																																																																									
2-20	1/2"	<b>05</b>																																																																									
3-30	1/2"	<b>08</b>																																																																									
4-40	1/2"	<b>11</b>																																																																									
5-50	1/2"	<b>13</b>																																																																									
6-60	3/4" or 1"	<b>15</b>																																																																									
7-70	3/4" or 1"	<b>19</b>																																																																									
8-80	3/4" or 1"	<b>21</b>																																																																									
9-90	3/4" or 1"	<b>24</b>																																																																									
10-100	3/4" or 1"	<b>27</b>																																																																									
11-110	3/4" or 1"	<b>29</b>																																																																									
12-120	3/4" or 1"	<b>32</b>																																																																									
13-130	3/4" or 1"	<b>35</b>																																																																									
14-140	3/4" or 1"	<b>37</b>																																																																									
15-150	3/4" or 1"	<b>40</b>																																																																									
16-160	3/4" or 1"	<b>42</b>																																																																									
17-170	3/4" or 1"	<b>45</b>																																																																									
18-180	3/4" or 1"	<b>48</b>																																																																									